

---

# ADVANCED MANUFACTURING

*Forging A Future Together*

---



# ADVANCED MANUFACTURING

## MIDDLE TENNESSEE STATE UNIVERSITY (MTSU)

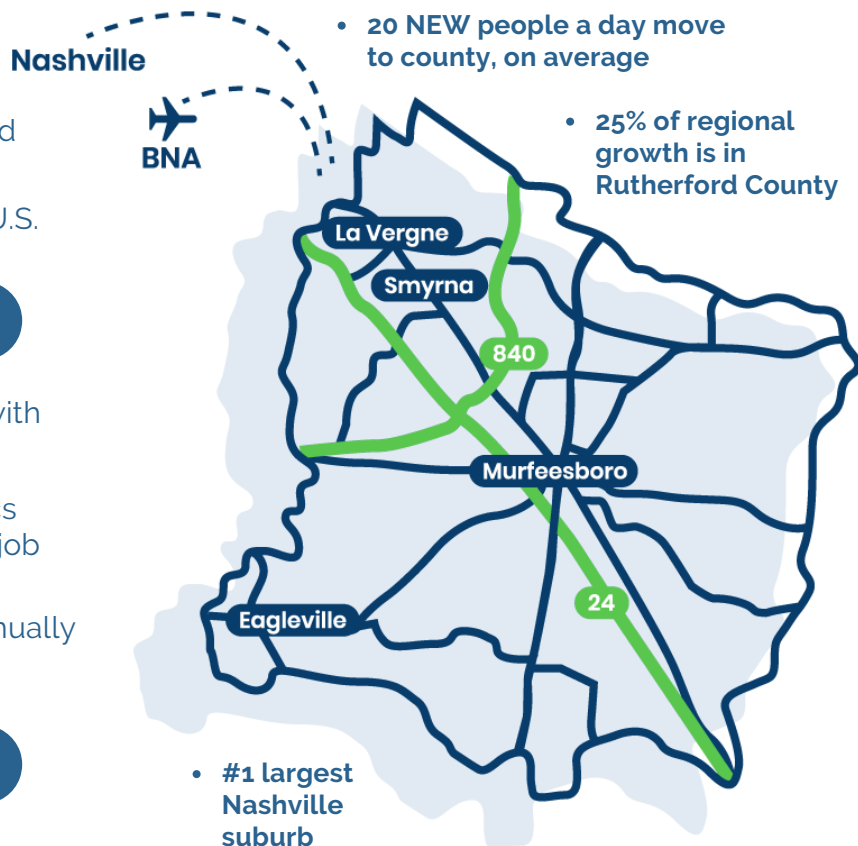
- #1** Largest major at MTSU -- Basic & Applied Sciences (BAS)
- ➔** BAS Fall 2020 : 5,500 students enrolled & 1,100 graduates
- ➔** Only Siemens Level 3 program in the U.S.

## MOTLOW STATE COMMUNITY COLLEGE

- #1** Largest of 5 campuses in Tennessee with 1,755 students enrolled in Fall 2020
- ➔** State-of-the-Art Automation & Robotics Training Center (ARTC) for in-demand job training needs
- ➔** On average 100+ degrees awarded annually for engineering & mechatronics fields

## TENNESSEE COLLEGE OF APPLIED TECHNOLOGY (TCAT)

**\$46M** training facility in Smyrna, TN -- preparing students for careers in advanced manufacturing



## QUICK STATS

**75%** of the US Market is within a 2-hour flight from Nashville (BNA) Airport

**#1**

busiest general aviation airport, Smyrna (MQY) Airport, is in Rutherford County, TN

**#1**

high school in Middle Tennessee, Central Magnet, is located in Rutherford County, TN  
- Nashville Business Journal 2021

**#8**

fastest growing mid-size city in the U.S.  
- Wallethub 2019

## REGIONAL TALENT

- ➔ 20 colleges and universities within a 45 minute drive time
- ➔ 124,000 students attend area colleges and universities
- ➔ 25,000 degrees awarded each year
- ➔ 60% of college graduates remain in the Nashville region

## MASTERED IN TENNESSEE

- 2.5K** Advanced Manufacturing companies call Tennessee home
- 158K** Tennesseans employed by Advanced Manufacturing establishments
- TN** Home to four OEM's & the highest producing auto manufacturing plant in the U.S. - Nissan North America

## SUCCESS STORY

"The Rutherford County Chamber succeeds in creating economic opportunities for its members on many levels. The Chamber assisted us in locating the best site, securing a PILOT program, and, on a very personal meeting with all employee families interested in relocating. Now that we are all moved in, we are utilizing the chamber's talents to develop Mechatronics Apprenticeship and Job Shadowing Programs."

*-Holly Montgomery, President, Schwan Cosmetics*

## WHO CALLS US HOME



## INDUSTRY SPECIFIC WAGE DATA

Purchasing Manager **\$105K**

Financial Manager **\$97K**

GM / Plant Manager **\$92K**

Electrical Engineer **\$85K**

Mechanical Engineer **\$81K**

Tool & Die Makers **\$25.18/hr**

Industrial Machining Mechanic **\$24.47/hr**

First Line Transportation Supervisor **\$23.44/hr**

Heavy Truck and Trailer Driver **\$23.44/hr**

Welders **\$19.83/hr**

Source: Q1 2021 EMSI